

FUEL INJECTOR REMOVAL/INSTALLATION [ZJ, Z6]

B3E011413250W02

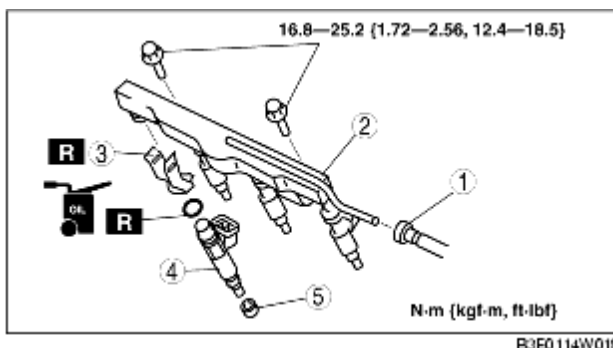
1. Follow "BEFORE SERVICE PRECAUTION" before performing any work operations to prevent fuel from spilling from the fuel system. (See [BEFORE SERVICE PRECAUTION \[ZJ, Z6, LF\]](#).)
2. Remove the battery cover. (See [BATTERY REMOVAL/INSTALLATION \[ZJ, Z6\]](#).)
3. Disconnect the negative battery cable.
4. Perform the following procedure for easier access.

European (L.H.D.) specs.

1. Remove the air cleaner. (See [INTAKE-AIR SYSTEM REMOVAL/INSTALLATION \[ZJ, Z6\]](#).)

U.K. specs.

1. Set the air cleaner cover out of the way. (See [INTAKE-AIR SYSTEM REMOVAL/INSTALLATION \[ZJ, Z6\]](#).)
2. Remove the air cleaner case.
5. Disconnect the fuel injector connector.
6. Remove in the order indicated in the table.



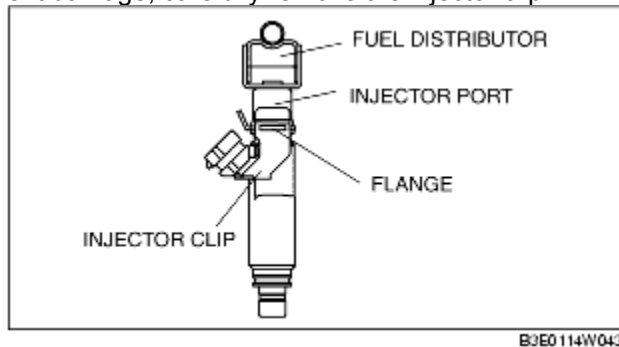
1	Quick release connector (See QUICK RELEASE CONNECTOR REMOVAL/INSTALLATION [ZJ, Z6, LF] .)
2	Fuel distributor
3	Injector clip (See Injector Clip Removal Note [ZJ, Z6] .) (See Injector Clip Installation Note [ZJ, Z6] .)
4	Fuel injector (See Fuel Injector Installation Note [ZJ, Z6] .)
5	Insulator

7. Install in the reverse order of removal.
8. Inspect all related parts by performing "AFTER SERVICE PRECAUTION". (See [AFTER SERVICE PRECAUTION \[ZJ, Z6, LF\]](#).)

Injector Clip Removal Note [ZJ, Z6]

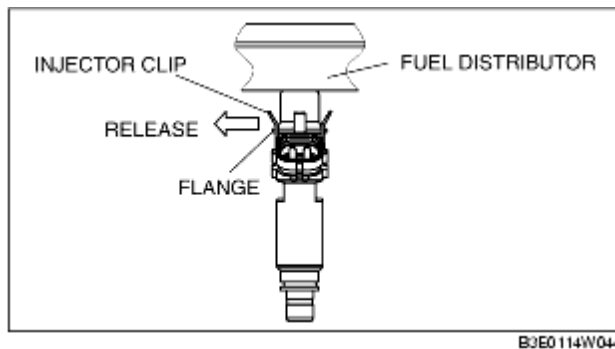
Caution

- If the injector port flange or fuel distributor coated part is damaged, it might cause fuel leakage. To prevent damage, carefully remove the injector clip.

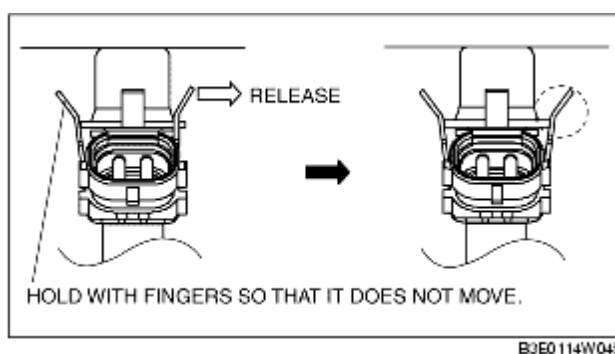


- Use of a deformed injector clip will cause the fuel injector to be connected incorrectly and could result in fuel leakage. Make sure to replace with a new injector clip after removing it.

1. Detach one side of the injector clip from the injector port flange.



2. While holding one side of the injector clip removed in Step 1 to prevent it shifting, release the other side of injector clip.



3. Detach the injector clip by sliding it in the axial direction of the fuel injector.

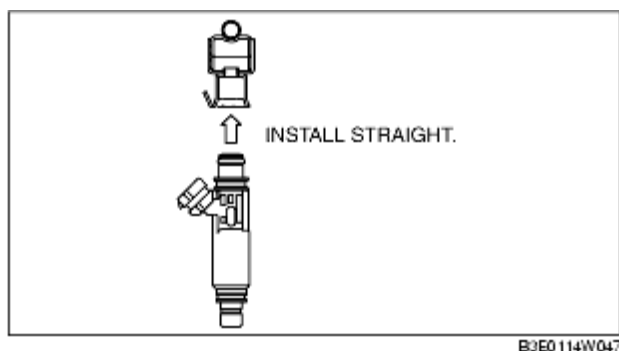
Fuel Injector Installation Note [ZJ, Z6]

1. Apply a small amount of clean oil to a new O-ring.

Caution

- A damaged O-ring could cause fuel leakage. Be careful not to damage the O-ring when installing the fuel injector.
- If there is foreign material on the fuel injector connecting part, it might damage the fuel injector and fuel distributor. To prevent this, clean the connecting part before connecting the fuel injector.

2. Install the fuel injector straight to the injector port.

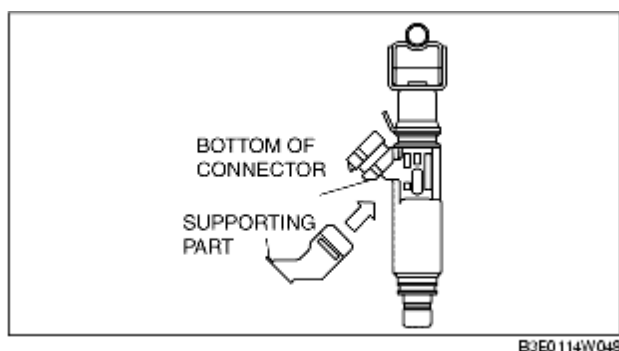


3. Verify that the fuel injector rotates smoothly.

- If it does not rotate smoothly, reinstall the fuel injector.

Injector Clip Installation Note [ZJ, Z6]

1. Install a new injector clip to the fuel injector and insert the supporting part completely to the lower part of the injector connector.



2. Insert the injector port flange into the injector clip groove, sliding the injector clip along the fuel injector with the injector clip groove and injector port flange parallel.

3. Verify that the injector port flange is completely inserted into the groove.